

Journal: Conservation Physiology  
Article id: cot009  
Article title: Shotgun proteomics as a viable approach for biological discovery in the Pacific oyster  
First Author: Emma Timmins-Schiffman  
Corr. Author: Emma Timmins-Schiffman

#### AUTHOR QUERIES - TO BE ANSWERED BY THE CORRESPONDING AUTHOR

The following queries have arisen during the typesetting of your manuscript. Please answer these queries by marking the required corrections at the appropriate point in the text. Failure to do so could result in delayed publication.

Query No	Nature of Query
Q1	Please check that all names have been spelled correctly and appear in the correct order. Please also check that all initials are present. Please check that the author surnames (family name) have been correctly identified by a pink background. If this is incorrect, please identify the full surname of the relevant authors. Occasionally, the distinction between surnames and forenames can be ambiguous, and this is to ensure that the authors' full surnames and forenames are tagged correctly, for accurate indexing online. Please also check all author affiliations.
Q2	Keywords taken from PDF. Please check.
Q3	Please write TCEP in full.
Q4	Please confirm that "Ammonium bicarbonate" is correct now or amend if necessary.
Q5	Please confirm that "5% acetonitrile" is correct now or amend if necessary.
Q6	Please provide g value for centrifugation instead of r.p.m.
Q7	Please confirm that "1 000 000" (rather than 1 million) is correct now or amend if necessary.
Q8	Should "1E-10" be changed to $1 \times 10^{-10}$ ?
Q9	Figures have been placed as close as possible to their first mention in the text. Please check that the figures are accurately placed in the text, that the images are correct, and that they have the correct caption and citation.
Q10	Please clarify if possible how it is 10 proteins in each oyster but 12 proteins in total.
Q11	Should "cis-trans" be italic?

Q12	If possible, please write CGI in full.
Q13	Please confirm that “metabolic processing” is correct now or amend if necessary.
Q14	Is “support the contention” OK now?
Q15	Should “cis-trans” be italic in this protein name?
Q16	Please note that we have relabelled this figure to ensure typographical consistency. Please check that the changes made are accurate.
Q17	Figure 3 not cited in the text. Please check.
Q18	Table 2 not cited in the text. Please check.

# MAKING CORRECTIONS TO YOUR PROOF

These instructions show you how to mark changes or add notes to the document using the Adobe Acrobat Professional version 7.0 (or onwards) or Adobe Reader 8 (or onwards). To check what version you are using go to **Help** then **About**. The latest version of Adobe Reader is available for free from [get.adobe.com/reader](http://get.adobe.com/reader).

For additional help please use the **Help** function or, if you have Adobe Acrobat Professional 7.0 (or onwards), go to [http://www.adobe.com/education/pdf/acrobat\\_curriculum7/acrobat7\\_lesson04.pdf](http://www.adobe.com/education/pdf/acrobat_curriculum7/acrobat7_lesson04.pdf)

## Displaying the toolbars

**Adobe Reader 8:** Select Tools, Comments & Markup, Show Comments and Markup Toolbar. **If this option is not available, please let me know so that I can enable it for you.**



**Acrobat Professional 7:** Select Tools, Commenting, Show Commenting Toolbar.

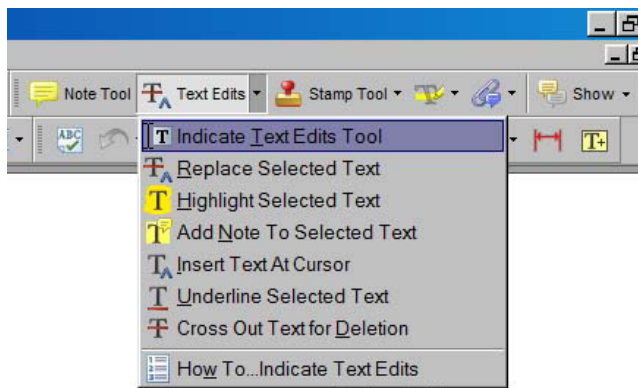


**Adobe Reader 10:** To edit the galley proofs, use the Comment Toolbar (Sticky Note and Highlight Text).



## Using Text Edits

This is the quickest, simplest and easiest method both to make corrections, and for your corrections to be transferred and checked.



1. Click **Text Edits**
2. Select the text to be annotated or place your cursor at the insertion point.
3. Click the **Text Edits** drop down arrow and select the required action.

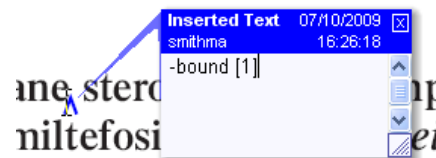
*You can also right click on selected text for a range of commenting options.*

## SAVING COMMENTS

In order to save your comments and notes, you need to save the file (**File, Save**) when you close the document. A full list of the comments and edits you have made can be viewed by clicking on the Comments tab in the bottom-left-hand corner of the PDF.

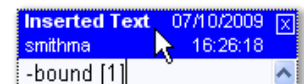
## Pop up Notes

With *Text Edits* and other markup, it is possible to add notes. In some cases (e.g. inserting or replacing text), a pop-up note is displayed automatically.



To **display** the pop-up note for other markup, right click on the annotation on the document and selecting **Open Pop-Up Note**.

To **move** a note, click and drag on the title area.



To **resize** of the note, click and drag on the bottom right corner.



To **close** the note, click on the cross in the top right hand corner.



To **delete** an edit, right click on it and select **Delete**. The edit and associated note will be removed.

# Shotgun proteomics as a viable approach for biological discovery in the Pacific oyster

Q1 **Emma Timmins-Schiffman**<sup>1,†</sup>, **Brook L. Nunn**<sup>2,‡</sup>, **David R. Goodlett**<sup>2,§</sup> and **Steven B. Roberts**<sup>1,\*,||</sup>

<sup>1</sup>School of Aquatic and Fishery Sciences, University of Washington, Box 355020, Seattle, WA 98195, USA

<sup>2</sup>Medicinal Chemistry, University of Washington, Box 357610, Seattle, WA 98195, USA;

\*Corresponding author: School of Aquatic and Fishery Sciences, University of Washington, Box 355020, Seattle, WA 98195, USA.  
Tel: +1 206 685 3742. Email: sr320@uw.edu

Shotgun proteomics offers an efficient means to characterize proteins in a complex mixture, particularly when sufficient genomic resources are available. In order to assess the practical application of shotgun proteomics in the Pacific oyster (*Crassostrea gigas*), liquid chromatography coupled with tandem mass spectrometry was used to characterize the gill proteome. Using information from the recently published Pacific oyster genome, 1043 proteins were identified. Biological samples ( $n = 4$ ) and corresponding technical replicates (three) were similar in both specific proteins identified and expression, as determined by normalized spectral abundance factor. A majority of the proteins identified (703) were present in all biological samples. Functional analysis of the protein repertoire illustrates that these proteins represent a wide range of biological processes, supporting the dynamic function of the gill. These insights are important for understanding environmental influences on the oyster, because the gill tissue acts as the interface between the oyster and its environment. *In silico* analysis indicated that this sequencing effort identified a large proportion of the complete gill proteome. Together, these data demonstrate that shotgun sequencing is a viable approach for biological discovery and will play an important role in future studies of oyster physiology.

Q2 **Key words:** *Crassostrea gigas*, Pacific oyster, proteomics

Received 13 February 2013; Revised 10 April 2013; Accepted 11 April 2013

*Conserv. Physiol.* (2013) 1: doi: 10.1093/conphys/cot009

## Introduction

Fluctuations in gene and protein expression can be sensitive and specific indicators of biological processes. At the transcript level, several methodologies can be used to characterize expression from the gene-centric to systems level, including quantitative PCR (e.g. [Griffitt et al., 2006](#); [Stumpp et al., 2011](#)), microarrays (e.g. [Todgham and Hofmann, 2009](#); [Lockwood et al., 2010](#)), and high-throughput sequencing (e.g. [Polato et al., 2011](#); [Philipp et al., 2012](#)). The use of

high-throughput sequencing technology has exponentially increased available genome and transcript information for taxa of ecological interest in recent years. While these results provide an accurate portrayal of changes at the molecular level, it is common that proteins have a more direct role in regulating physiological processes and responding to environmental change.

Historically, there have been several technical and analytical challenges in characterizing global protein expression.

<sup>†</sup>E.T.-S. performed the experimental and laboratory work, performed the data analysis, and was primary author of the manuscript.

<sup>‡</sup>B.L.N. assisted with the laboratory work and helped to write and revise the manuscript.

<sup>§</sup>D.R.G. provided support to do the laboratory work and assisted in writing and revising the manuscript.

<sup>||</sup>S.B.R. helped with the experimental design, data analysis, and writing and revising of the manuscript.

© The Author 2013. Published by Oxford University Press on behalf of The Society for Experimental Biology.

This is an Open Access article distributed under the terms of the Creative Commons Attribution License (<http://creativecommons.org/licenses/by/3.0/>), which permits unrestricted distribution and reproduction in any medium, provided the original work is properly cited.

1

One challenge is the need to have sufficient genomic resources available to describe proteins of interest. Specifically, protein sequencing generally produces short amino acid fragments that require a known corresponding gene for identification and annotation purposes. However, the lack of genomic resources has not completely hampered proteomic studies. For example, researchers characterized the physiological response of *Gillichthys mirabilis* gill tissue exposed to osmotic and temperature stress using two-dimensional gel electrophoresis without sequencing proteins (Kültz and Somero, 1996). In another study, researchers used surface enhanced laser desorption/ionization and identified 11 differentially expressed proteins in the gill tissue of *Oncorhynchus mykiss* exposed to zinc stress (Hogstrand *et al.*, 2002). Four proteins were identified based on a combination of their physical properties (i.e. mass and binding) coupled with sequence similarity comparisons with limited teleost protein sequences in the SwissProt database (Hogstrand *et al.*, 2002).

The use of predicted protein sequences in closely related species can assist in annotation, but species-specific information will provide more accurate results. This is evident in a study on protein expression in pea (*Pisum sativum*) chloroplasts, where concurrent complementary DNA sequencing facilitated the identification of a greater number of proteins compared with identification through homology searches with closely related model species (Bräutigam *et al.*, 2008). The reason that species-specific information provides such an advantage is due to how modern-day protein sequence identification is executed. The vast majority of high-throughput mass spectrometry (MS) proteomics is accomplished by matching observed peptide fragmentation patterns (tandem mass spectra) to theoretical spectra. This is possible because peptides fragment in a predictable manner, allowing for theoretical tandem mass spectra to be created *in silico* from a given protein sequence, stressing the importance of the database used. These correlation-based algorithms require the peptide mass (precursor mass) and peptide fragmentation (tandem mass spectrum). Even when employing databases of closely related species, a large number of viable tandem mass spectra of peptides might not be assigned accurately to a protein, because a single amino acid mutation could significantly alter the peptide mass and resulting fragmentation pattern.

As technological advances have continued to increase the accessibility of whole transcriptomes and genomes to researchers, there is increasing interest in leveraging these data to carry out proteomic studies for both biological discovery and for better characterizing physiological responses to environmental change. Recently, the Pacific oyster (*Crassostrea gigas*) genome was sequenced (Zhang *et al.*, 2012). Given the availability of this resource, our objective was to quantify the level of information (and respective variability) attainable in proteomic studies in oysters. There have been several prior studies examining protein expression in oysters using liquid chromatography coupled with tandem mass spectrometry (LC-MS/MS) with samples separated by two-dimensional gel electrophoresis (2-DE) beforehand. In

larval oysters, these proteomic techniques have identified specific proteins that are responsible for early developmental changes in *C. gigas* (Huan *et al.*, 2012) and the larval *C. gigas* response to elevated partial pressures of CO<sub>2</sub> (ocean acidification; Dineshram *et al.*, 2012). These methods have also been used to identify and sequence proteins that are differentially regulated in a range of physiological situations in adult oyster species. The discoveries include the following: the up-regulation of antioxidant proteins in response to ocean acidification (Tomanek *et al.*, 2011); expression profiles denoting high-quality oocytes (Corporeau *et al.*, 2012); differing proteomic profiles between disease-resistant and disease-susceptible oysters (Simonian *et al.*, 2009); and specific responses to metal exposure (Thompson *et al.*, 2011, 2012a, 2012b; Liu and Wang, 2012) and acid sulfate run-off (Amaral *et al.*, 2012). These seminal studies in marine invertebrate proteomics demonstrate that analysis of global protein expression is a powerful tool to facilitate our understanding of the molecular physiological response to environmental stressors.

An alternative to 2-DE approaches is to perform shotgun proteomics. Shotgun proteomics is the sequencing of a complex mixture of peptides using LC-MS/MS without prior separation (i.e. 2-DE). One of the main advantages of using 2-DE methods is that information on the physical properties of the proteins (mass and isoelectric point) can be used in the protein identification, whereas these empirical data are lost in the strictly tandem MS approaches. However, tandem MS has significantly greater data efficiency than gel-based approaches. The use of shotgun proteomics allows for a greater number of proteins to be identified rapidly from a single sample, providing a more complete metabolic picture of cellular function and physiology. This method has been demonstrated by Muralidharan *et al.* (2012), who used shotgun proteomics to uncover *Saccostrea glomerata* haemocyte proteomic responses to metal contamination, and by Dheilly *et al.* (2012, 2013), who explored the proteomic response of coelomocytes to immune challenge in two urchin species.

In this study, we used shotgun proteomics to sequence the gill proteome of the Pacific oyster, *Crassostrea gigas*. The gill is the interface between bivalves and their environment, necessitating that the tissue performs a variety of physiological functions in response to the environment (e.g. David *et al.*, 2007; Wang *et al.*, 2010). The identification of proteins that are expressed in gill tissue supports the development of tools that can help to guide future research on the molecular physiology of molluscs faced with stresses such as climate change and disease. The goal of this study was to determine the effectiveness of using a shotgun proteomics approach and to carry out functional characterization of proteins expressed in gill tissue.

## Materials and methods

### Oysters

Pacific oysters (*C. gigas*, 18 months old) were collected in Shelton, WA, USA. Oysters were transferred to Friday

Harbor Laboratories (Friday Harbor, WA, USA) into a flow-through system at 13°C for 6 weeks. Eight 4 l vessels containing six oysters each were kept in a water bath with seawater flowing through at 57.5 ml/min. Vessels were cleaned every other day with fresh-water and salt-water rinses. Oysters were fed Shellfish Diet 1800 (Reed Mariculture, Campbell, CA, USA). At the end of 6 weeks, gill tissue was removed from four oysters and immediately flash frozen in liquid nitrogen for proteomic analysis.

### Protein digestion and desalting

Gill tissue samples (50–100 mg) were homogenized in 50 mM  $\text{NH}_4\text{HCO}_3$  (100  $\mu\text{l}$ ) using RNase-free plastic pestles. Each homogenized gill sample was sonicated four times with a probe sonicator and stored on dry ice between sonications. After sonication, protein concentrations were measured using the Bradford assay, following the manufacturer's protocol (Pierce, Thermo Fisher Scientific, Rockford, IL, USA). Urea (36 mg) was added to each sample (for a total concentration of 6 M) to stabilize peptides. Next, 1.5 M Tris (pH 8.8; 6.6  $\mu\text{l}$ ) was added, followed by 200 mM TCEP (5  $\mu\text{l}$ ). Samples were incubated for 1 h at 37°C on a shaker. To alkylate the proteins, 200 mM iodoacetamide (20  $\mu\text{l}$ ) was added. Samples were then vortexed, and incubated for 1 h at room temperature in the dark. To absorb excess iodoacetamide, 200 mM dithiothreitol (20  $\mu\text{l}$ ) was added, followed by vortexing and incubation at room temperature for 1 h. A volume equal to approximately 100  $\mu\text{g}$  was removed, and the remainder was discarded. Ammonium bicarbonate (200  $\mu\text{l}$  of 25 mM) was added to dilute the urea, and then high-pressure liquid chromatography grade MeOH (50  $\mu\text{l}$ ) was added to each tube. Trypsin was solubilized in a trypsin dilution buffer (20  $\mu\text{l}$ ) to a concentration of 1  $\mu\text{g}/\mu\text{l}$  (Promega, Madison, WI, USA), and 3  $\mu\text{l}$  of this solution was added to each sample to digest the proteins enzymatically. The samples were incubated overnight at 37°C. The next day, dilute formic acid was added, and the samples were evaporated on the speed vac to near dryness. Samples were reconstituted in 200  $\mu\text{l}$  of acetonitrile and 0.1% trifluoroacetic acid.

Samples were desalted by passage through a pre-prepared MacroSpin column, following the manufacturer's specifications (The Nest Group, Southborough, MA, USA). After desalting, the remaining solvent was evaporated using a speed vac.

### Liquid chromatography and tandem mass spectrometry

Mass spectrometry was performed at the University of Washington Proteomics Resource (Seattle, WA, USA). Samples were resuspended in 2% acetonitrile and 0.1% formic acid in water (100  $\mu\text{l}$ ). Samples were then vortexed to mix and spun down at 15 000 r.p.m. for 10 min. The supernatant was aliquoted to autosampler vials. Nano LC separation was performed with a nanoACQUITY system (Waters, Milford, MA, USA) interfaced to an LTQ Orbitrap XL mass

spectrometer (Thermo Scientific, San Jose, CA, USA). Peptides were trapped on a 100  $\mu\text{m}$  i.d.  $\times$  20 mm long pre-column packed with 200 Å (5  $\mu\text{m}$ ) Magic C18 particles (C18AQ; Michrom, Auburn, CA, USA). For separation, a 75  $\mu\text{m}$  i.d.  $\times$  250 mm long analytical column with a laser pulled emitter tip packed with 100 Å (5  $\mu\text{m}$ ) Magic C18 particles (C18Q; Michrom) was used and analysed in positive ion mode. For each LC-MS/MS analysis, an estimated amount of 0.5  $\mu\text{g}$  of peptides was loaded onto the pre-column at 2  $\mu\text{l}/\text{min}$  in water/acetonitrile (98%/2%), with 0.1% (v/v) formic acid. Peptides were eluted using an acetonitrile gradient flowing at 240 nl/min, using a mobile phase consisting of the following components: Solvent C (water, 0.1% formic acid) and Solvent D (acetonitrile, 0.1% formic acid). The gradient programme was as follows: 0–1 min, Solvent C (98%) and Solvent D (2%); 1 min, Solvent C (90%) and Solvent D (10%); 90 min, Solvent C (65%) and Solvent D (35%); 91–101 min, Solvent C (20%) and Solvent D (80%); and 102–120 min, Solvent C (98%) and Solvent D (2%). Peptide spectra were acquired by scans in the Orbitrap followed by the ion trap.

### Data acquisition

High-resolution full precursor ion scans were acquired at 60 000 resolution in the Orbitrap over 400–2000  $m/z$  while six consecutive tandem mass spectra were acquired by collision-induced dissociation in the linear ion trap (LTQ). The data-dependent ion threshold was set at 5000 counts for MS/MS, and the maximum allowed ion accumulation times were 400 ms for full scans and 100 ms for MS/MS measurements. The number of ions accumulated was set to 1 000 000 for Orbitrap scans and 10 000 for linear ion trap MS/MS scans. An angiotensin and neurotensin standard was run after every eight injections. Each sample was injected in triplicate in a novel randomized order.

### Protein identification and data analysis

Peptide sequence and corresponding protein identification for all mass spectra was carried out using SEQUEST (Eng *et al.*, 1994) and the *C. gigas* proteome version 9 (Zhang *et al.*, 2012, <http://dx.doi.org/10.5524/100030>). A DECOY database was created by reversing the *C. gigas* proteome and adding it to the forward database. This was completed in order to determine false positive matches of peptide spectra matching, and yielded a false discovery rate of ~0.6%. Search parameters included trypsin as the assigned enzyme and a precursor mass accuracy of  $\pm 3$  Da. SEQUEST results were analysed using PeptideProphet and ProteinProphet in order to evaluate peptide matches statistically and assign protein probabilities (Nesvizhskii *et al.*, 2003). Only proteins with a probability of  $\geq 0.9$  (estimated false discovery rate of 0.6%), a minimum of two unique peptide hits within a single replicate, and a minimum of four total tandem mass spectral assignments in the combined technical and biological replicates were used in further characterizations described below.

Q8

In order to annotate corresponding proteins, the *C. gigas* proteome (version 9) was compared with the UniProtKB/Swiss-Prot database ([www.uniprot.org](http://www.uniprot.org)) using Blastp with an e-value limit of 0.001. Associated gene ontology (GO) terms were used to classify sequences based on biological process, as well as to categorize genes into parent categories (GO Slim). Enrichment analysis was used to identify over-represented biological processes in the gill proteome compared with the entire proteome [Database for Annotation, Visualization and Integrated Discovery (DAVID), version 6.7; Huang *et al.*, 2009a, 2009b, <http://david.abcc.ncifcrf.gov/>]. The results of the enrichment analysis were visualized in REViGO (Reduce and Visualize Gene Ontology; Supek *et al.*, 2011, <http://revigo.irb.hr/>). Normalized spectral abundance factor (NSAF; Florens *et al.*, 2006) was used to calculate expression for each protein in each oyster. Technical replicates were pooled by taking the sum of total independent tandem mass spectra for each protein (SpC). For each protein, SpC was divided by protein length (*L*). The NSAF is calculated from SpC/*L* divided by the sum of all SpC/*L* values for the proteins for a particular oyster. Comparisons of proteins identified across biological samples were visualized using Venny (Oliveros, 2007).

The minimum number of peptides needed to be sequenced to optimize unique protein identifications was determined using an *in silico* approach. A list was constructed of all sequenced peptides and their matching protein identification. Redundancies were maintained in this list, so that if a certain peptide was sequenced multiple times it was included multiple times in the list. Randomized subsets of this list were generated using the sample function in R (R Development Core Team, 2009). The number of hypothetically sequenced peptides in these lists ranged from 500 to 70 000. A plot was generated to visualize the relationship between each sample size of randomly chosen peptides and the number of unique proteins identified.

## Results

### Liquid chromatography and tandem mass spectrometry

A combined total of 175 818 tandem MS spectra were generated across all four biological and three technical replicates using the Orbitrap mass spectrometer. Expression values were comparable between biological replicates, with  $r^2$  ranging from 0.800 to 0.889 (Supplementary Data 1). A total of 54 521 unique peptides contributed to the identification of 2850 proteins, with a probability score threshold of 0.9 (Supplementary Data 2). Of these proteins, 1043 had at least two unique peptide hits and four tandem mass spectra in the combined replicates. The mean amino acid coverage across all proteins was 13.3%. Protein identifications for each injection, including protein probability scores, number of total and unique spectra, and peptide sequences, are provided in

Supplementary Data 3. The NSAF values for each protein are provided in Supplementary Data 4.

For all biological samples, the number of proteins identified in each technical replicate was consistent with minimal standard deviation (1.2–3.5%). In each biological replicate, the proteins were identified from between 43 275 and 44 720 sequenced peptides (standard deviation as a percentage of the mean ranged from 4.8 to 7.4%). For each oyster, 54–55% of the identified proteins were present in all three technical replicates. Using spectral counts as a proxy for relative expression, protein expression levels were consistent across technical replicates (Fig. 1).

Q9

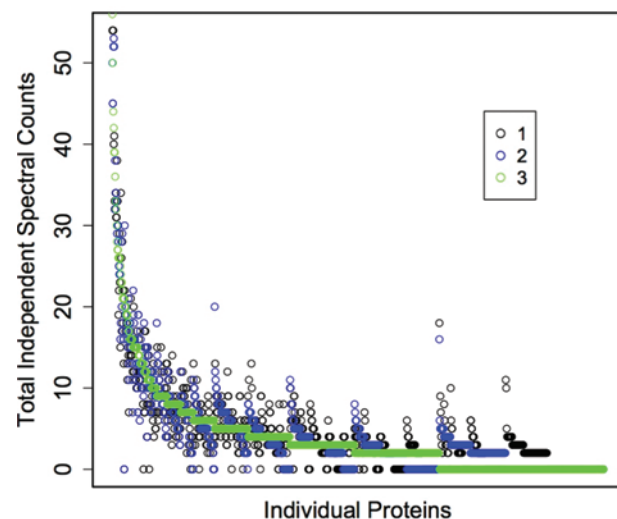
The number of proteins identified in each oyster (after pooling technical replicates; see Methods) was 923, 959, 883, and 875 (Table 1). Most proteins ( $n = 703$ ) were identified across all biological samples (Fig. 2).

In order to evaluate general protein expression and assess sample variability, the 10 most highly expressed proteins in each oyster were identified. The 12 most abundant proteins in the four oysters analysed represent core cell structure and function, such as nucleosome assembly, cytoskeleton structure, muscle components, turnover of intracellular proteins, and protection against oxidative stress. Eight of these 12 proteins (arginine kinase, actin, histone H2A, histone H2B.3, histone H4, peptidyl-prolyl isomerase, extracellular superoxide dismutase, and cytosol aminopeptidase) were identified in the top 10 most expressed proteins in all four oysters.

Q10

Q11

Of the 1043 proteins expressed across all samples, 1033 were annotated using the UniProt-KB/SwissProt database. Of the annotated proteins, 888 were associated with Gene

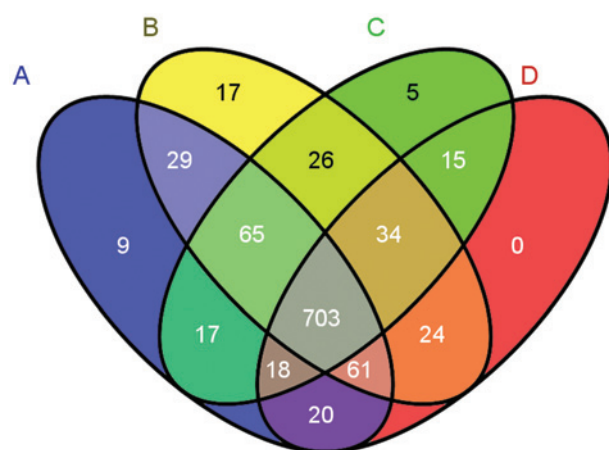


**Figure 1:** Total independent spectral counts for three technical replicates for oyster A plotted for each protein ( $n = 1500$ ). Similar patterns were observed for the other three oysters (data not shown).

Q16

**Table 1:** Summary of the number of peptides sequenced and proteins identified for each oyster (labelled A–D)

	Oyster			
	A	B	C	D
Peptides sequenced (total)	44 720	43 646	44 177	43 275
Technical replicate no. 1	16 112	15 390	15 611	15 180
Technical replicate no. 2	14 645	14 329	14 592	14 290
Technical replicate no. 3	13 963	13 927	13 974	13 805
Proteins identified (total)	923	959	883	875
Technical replicate no. 1	731	730	704	683
Technical replicate no. 2	722	729	685	667
Technical replicate no. 3	694	771	657	677
Proteins identified in all replicates	509	514	484	478

**Figure 2:** Venn diagram of proteins identified among biological samples. Proteins identified in oyster A are in the blue ellipse, B in yellow, C in green, and oyster D proteins are in the red ellipse.

Ontology classifications. A majority of proteins were associated with the biological process of protein metabolism ( $n = 273$ ), followed by cell organization and biogenesis ( $n = 201$ ), and transport ( $n = 165$ ).

Enrichment analysis was carried out to determine which biological processes were over-represented in gill tissue in comparison to the entire proteome. Several of the functional groups identified were associated with the abundant proteins involved in metabolism and transport, as well as structural processes (i.e. actin-filament and microtubule) and oxidation–reduction. The most significantly enriched biological process was generation of precursor metabolites and energy. Protein IDs (GI numbers) corresponding to the proteins that contributed to GO term enrichment are listed in Supplementary Data 5.

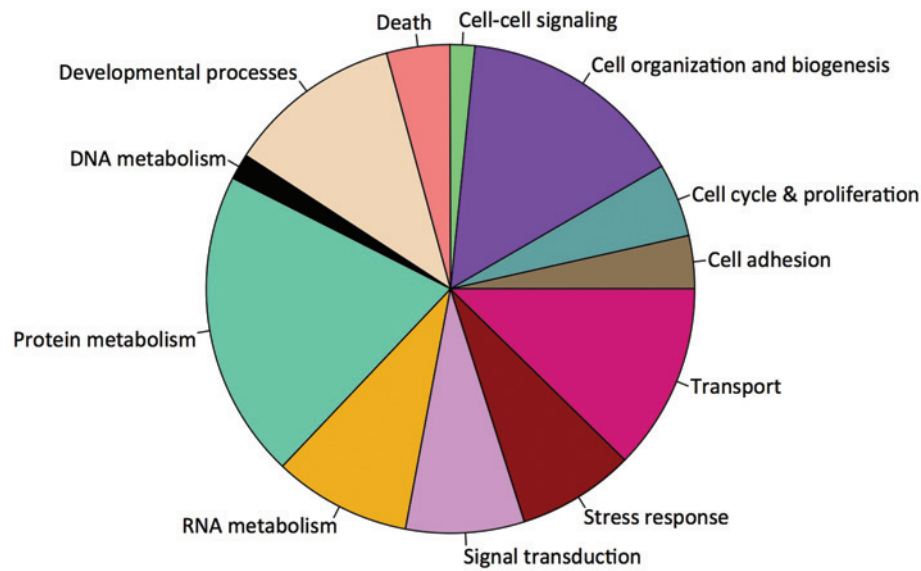
The number of unique proteins identified with different numbers of sequenced peptides created an exponential curve (Fig. 4). The plateau began around 30 000–40 000 sequenced peptides, with a total of 2400–2516 unique peptides identified. New unique peptides were still identified in larger sample sizes of peptides, but the return per sequenced peptide diminished.

## Discussion

Technical and analytical challenges have resulted in limited focus on quantitative proteomics approaches in environmental physiology. Given the recent technological advances in the proteomics field (Yates *et al.*, 2009) and release of the Pacific oyster genome (Zhang *et al.*, 2012), we set out to assess the practical use of quantitative proteomics in this model species. For all biological samples, a majority of the proteins identified (54–55%) were present in all respective technical replicates. Relative expression across technical and biological replicates was also consistent (Fig. 1, Supplementary Data 1). However, there were some proteins not identified in all technical replicates. Thus, proteins with limited expression might not be detected and/or expression levels might not be reflected accurately. It should be noted that the inclusion of proteins in our analysis is highly dependent on threshold selection. In the present study, a protein was included only if it had two unique spectral hits within a replicate and had four total spectra across the combined technical replicate data. If the threshold were adjusted to be more conservative (i.e. a greater total spectral count threshold), variability would be reduced. With a total spectral count threshold of five, 983 proteins are identified and 56–57% of the proteins are in all three technical replicates; with a threshold of 10, 845 proteins are identified and 61–63% of the proteins are in all technical replicates (data not shown).

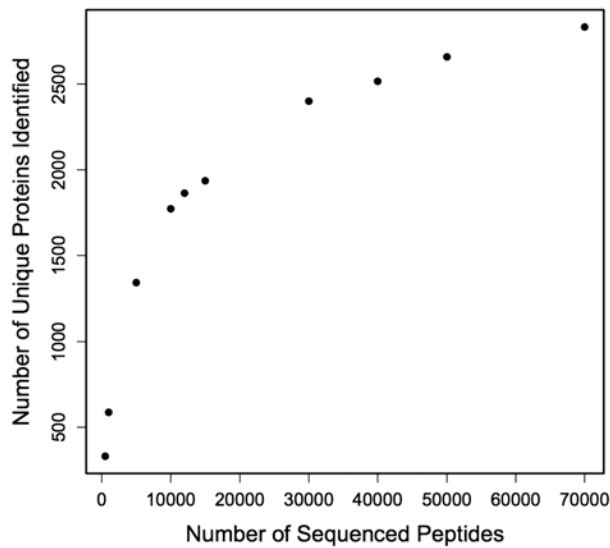
The number of proteins identified and subsequently annotated can vary tremendously based on experimental design, target tissue, match thresholds, and genomic resources available. In the present study, the majority of the proteins (703) were identified in all biological samples. Based on *in silico* analysis (Fig. 4), we have sequenced a relatively complete proteome for oyster gill tissue. In a study of European whitefish, *Coregonus lavaretus*, proteomics on fish larvae yielded sequencing of peptides corresponding to 1500 proteins (Papakostas *et al.*, 2012). The similar number of protein identifications in whitefish compared with our study (1043) is likely to be associated with the tissue complexity. In the whitefish study, whole body tissue was examined. In a meta-proteomics study of marine microbes, 2273 distinct proteins were identified across 10 samples (Morris *et al.*, 2010). The large number of proteins identified by Morris *et al.* (2010) is evidence of the large number of organisms and ecological niches that were sampled in their study. Previous proteomics studies on Sydney rock oyster haemolymph have found relatively few proteins compared with the present study in gill tissue, with the number of identified proteins ranging from





**Figure 3:** Representation of biological processes corresponding to the proteins identified from oyster gill tissue.

Q17



**Figure 4:** Predicted number of unique proteins that would be identified based on a sequential increase in peptide sequences.

**Table 2:** The 12 most abundant proteins in the gill proteome as determined by identifying the 10 most abundant proteins in each oyster

Q18

Protein ID	Protein description	Accession no.	Oysters
CGI_10021481	Arginine kinase	O15990	A,B,C,D
CGI_10022730	Actin	O17320	A,B,C,D
CGI_10008058	Histone H2A	P02269	A,B,C,D
CGI_10008057	Histone H2B.3	P35069	A,B,C,D
CGI_10008056	Histone H4	Q28DR4	A,B,C,D
CGI_10025180	Peptidyl-prolyl isomerase	P54985	A,B,C,D
CGI_10004092	Extracellular superoxide dismutase	Q08420	A,B,C,D
CGI_10006610	Cytosol aminopeptidase	Q65FE6	A,B,C,D
CGI_10013347	ATP synthase subunit $\beta$	Q05825	A,B,D
CGI_10012330	Tubulin $\beta$ chain	P11833	B,C
CGI_10000082	Barrier-to-autointegration factor	Q6P026	C,D
CGI_10010974	Glyceraldehyde-3-phosphate dehydrogenase	P56649	A

Q15

Protein ID is given, as well as protein description from UniProt-KB/SwissProt, SwissProt Accession Number and the oysters in which the protein was detected.

49 to 514 (Simonian *et al.*, 2009; Thompson *et al.*, 2011, 2012a, 2012b; Muralidharan *et al.*, 2012). The identification of fewer proteins in haemolymph is probably because there are fewer cell types present in haemolymph compared with the gill.

In addition to assessing the feasibility of shotgun proteomics in the Pacific oyster, we were also able to provide a functional characterization of the gill proteome. Gene ontology characterization identified a majority of proteins associated with protein metabolism, cell organization and

biogenesis, and transport. These biological functions would be expected, because gill tissue is the primary interface between the oyster and the environment (water), where the tissue's major functions include ion regulation, respiration,

and sorting of food particles. The high number of proteins involved in these GO categories is not necessarily unique to gill tissue but is likely to reflect the multifunctional nature of a tissue that responds to variable environments.

Enrichment analysis was performed to identify which functional groups of proteins expressed in gill tissue were over-represented in comparison to the complete protein repertoire. Several of the functional groups identified were associated with the abundant proteins involved in metabolism and transport, as well as cellular structure. These enrichment analysis findings are consistent with a previous transcriptomic comparison between *C. gigas* gill tissue and other tissues, with genes predominantly expressed in the gill being involved in epithelia morphogenesis, cilia movement, and detoxification and defense (Dheilly *et al.*, 2011). Some of the cytoskeletal proteins identified in gill were tektin-3, microtubule-associated protein futsch, and actin. Tektin is part of cilia and flagellar microtubules and has been found to change expression in response to an elevated partial pressure of CO<sub>2</sub> (Dineshram *et al.*, 2013), and has also been identified in Sydney rock oyster haemolymph (Thompson *et al.*, 2012b). Transport proteins included ATP synthases and v-type proton ATP synthase. ATP synthase is a good marker of environmental stress in *C. gigas*, because its transcript expression is altered in response to hypoxia (David *et al.*, 2005) and pesticide exposure (Tanguy *et al.*, 2005). The most significantly enriched biological process was generation of precursor metabolites and energy. Many of the proteins that contributed to the over-representation of this GO category in the gill tissue are involved in metabolic processes, such as 2-oxoglutarate dehydrogenase, dihydrodipicolinate synthase, acetyltransferase, glycogen phosphorylase, triose phosphate isomerase, and hexokinase. These enzymes are all involved in the breakdown of carbohydrates and other food inputs, and thus underline the important metabolic processes that occur in the gill.

**Q13** Proteins involved in oxygen and reactive oxygen species metabolic processing were also enriched in gill tissue, providing further support for the importance of gill tissue in response to environmental change. Previous transcriptomics-based studies of oysters support the contention that the oxidative stress response is an important role of the gill tissue (e.g. David *et al.*, 2007; Fleury and Huvet, 2012). Genes and proteins responding to production of reactive oxygen species increase in oysters in many instances of environmental stress, such as exposure to contaminants (e.g. David *et al.*, 2007; Muralidharan *et al.*, 2012), as well as exposure to ocean acidification (Tomanek *et al.*, 2011) and temperature stress (Meistertzheim *et al.*, 2007). Specific proteins that contribute to the response reactive oxygen species are enzymes instrumental in the physiological response to oxidative stress, such as the antioxidants superoxide dismutase, peroxiredoxin, and catalase.

**Q14** The success of the shotgun sequencing effort was due in part to the recent publication of the *C. gigas* genome,

emphasizing that the dissemination of genomic resources provides invaluable opportunities for advancement for the scientific community. The sharing of these large data sets, such as the genome and the gill proteome, will support further research into the effects of environmental changes on the oyster in terms of both acclimatization and adaptation. The characterization of the scope of acclimatization and adaptation are instrumental in understanding how the Pacific oyster, an ecologically and economically important species, can respond to climate change at the physiological and population levels. These research results demonstrate that shotgun sequencing is a viable approach for biological discovery and that it will be likely to play an important role in future studies on oyster physiology.

## Supplementary material

Supplementary material is available at *JXB* online.

## Acknowledgements

We would like to thank Taylor Shellfish for donating the oysters used for this study, Emily Carrington and Ken Sebens for providing laboratory space, and Ronen Elad who assisted with oyster care. Priska von Haller helped with experimental design for the LC-MS/MS and provided technical assistance. Jimmy Eng and Tahmina 'Eva' Jahan ran the database searches for protein identification. This work was supported by National Oceanographic and Atmospheric Administration Saltonstall-Kennedy Program (grant no. NA09NMP4270093).

## References

- Amaral V, Thompson EL, Bishop MJ, Raftos DA (2012) The proteomes of Sydney rock oysters vary spatially according to exposure to acid sulfate runoff. *Mar Freshw Res* 63: 361–369.
- Bräutigam A, Shrestha RP, Whitten D, Wilkerson CG, Carr KM, Froehlich JE, Weber APM (2008) Low-coverage massively parallel pyrosequencing of cDNAs enables proteomics in non-model species: comparison of a species-specific database generated by pyrosequencing with databases from related species for proteome analysis of pea chloroplast envelopes. *J Biotechnol* 136: 44–53.
- Corporeau C, Vanderplancke G, Boulais M, Suquet M, Quéré C, Boudry P, Huvet A, Madec S (2012) Proteomic identification of quality factors for oocytes in the Pacific oyster *Crassostrea gigas*. *J Proteomics* 75: 5554–5563.
- David E, Tanguy A, Pichavant K, Moraga D (2005) Response of the Pacific oyster *Crassostrea gigas* to hypoxia exposure under experimental conditions. *FEBS J* 272: 5635–5652.
- David E, Tanguy A, Moraga D (2007) Peroxiredoxin 6 gene: a new physiological and genetic indicator of multiple environmental stress response in Pacific oyster *Crassostrea gigas*. *Aquat Toxicol* 84: 389–398.
- Dheilly NM, Lelong C, Huvet A, Favrel P (2011) Development of a Pacific oyster (*Crassostrea gigas*) 31,918-feature microarray: identification

- of reference genes and tissue-enriched expression patterns. *BMC Genomics* 12: 468.
- Dheilly NM, Haynes PA, Raftos DA, Nair SV (2012) Time course proteomic profiling of cellular responses to immunological challenge in the sea urchin, *Heliocidaris erythrogramma*. *Dev Comp Immunol* 37: 243–256.
- Dheilly NM, Raftos DA, Haynes PA, Smith LC, Nair SV (2013) Shotgun proteomics of coelomic fluid from the purple sea urchin, *Strongylocentrotus purpuratus*. *Dev Comp Immunol* 40: 35–50.
- Dineshram R, Wong KKW, Xiao S, Yu Z, Qian PY, Thiyagarajan V (2012) Analysis of Pacific oyster larval proteome and its response to high-CO<sub>2</sub>. *Mar Pollut Bull* 64: 2160–2167.
- Dineshram R, Thiyagarajan V, Lane A, Ziniu Y, Xiao S, Leung PTY (2013) Elevated CO<sub>2</sub> alters larval proteome and its phosphorylation status in the commercial oyster, *Crassostrea hongkongensis*. *Mar Biol* In press.
- Eng JK, McCormack AL, Yates JR (1994) An approach to correlate tandem mass spectral data of peptides with amino acid sequences in a protein database. *J Am Soc Mass Spectrom* 5: 976–989.
- Fleury E, Huvet A (2012) Microarray analysis highlights immune response of Pacific oysters as a determinant of resistance to summer mortality. *Mar Biotechnol* 14: 203–217.
- Florens L, Carozza MJ, Swanson SK, Fournier M, Coleman MK, Workman JL, Washburn MP (2006) Analyzing chromatin remodeling complexes using shotgun proteomics and normalized spectral abundance factors. *Methods* 4: 303–311.
- Griffitt RJ, Chandler GT, Greig TW, Quattro JM (2006) Cathepsin B and glutathione peroxidase show differing transcriptional responses in the grass shrimp, *Palaemonetes pugio* following exposure to three xenobiotics. *Environ Sci Technol* 40: 3640–3645.
- Hogstrand C, Balesaria S, Glover CN (2002) Application of genomics and proteomics for study of the integrated response to zinc exposure in a non-model fish species, the rainbow trout. *Comp Biochem Physiol B Biochem Mol Biol* 133: 523–535.
- Huan P, Wang H, Dong B, Liu B (2012) Identification of differentially expressed proteins involved in the early larval development of the Pacific oyster *Crassostrea gigas*. *J Proteomics* 75: 3855–3865.
- Huang DW, Sherman BT, Lempicki RA (2009a) Systematic and integrative analysis of large gene lists using DAVID Bioinformatics Resources. *Nat Protoc* 4: 44–57.
- Huang DW, Sherman BT, Lempicki RA (2009b) Bioinformatics enrichment tools: paths toward the comprehensive functional analysis of large gene lists. *Nucleic Acids Res* 37: 1–13.
- Kültz D, Somero GN (1996) Differences in protein patterns of gill epithelial cells of the fish *Gillichthys mirabilis* after osmotic and thermal acclimation. *J Comp Physiol B* 166: 88–100.
- Liu F, Wang W (2012) Proteome pattern in oysters as a diagnostic tool for metal pollution. *J Hazard Mater* 239–240: 241–248.
- Lockwood BL, Sanders JG, Somero GN (2010) Transcriptomic responses to heat stress in invasive and native blue mussels (genus *Mytilus*): molecular correlates of invasive success. *J Exp Biol* 213: 3548–3558.
- Meistertzheim AL, Tanguy A, Moraga D, Thébaud MT (2007) Identification of differentially expressed genes of the Pacific oyster *Crassostrea gigas* exposed to prolonged thermal stress. *FEBS J* 274: 6392–6402.
- Morris RM, Nunn BL, Frazer C, Goodlett DR, Ting YS, Rocap G (2010) Comparative metaproteomics reveals ocean-scale shifts in microbial nutrient utilization and energy transduction. *ISME J* 4: 673–685.
- Muralidharan S, Thompson E, Raftos D, Birch G, Haynes PA (2012) Quantitative proteomics of heavy metal stress responses in Sydney rock oysters. *Proteomics* 12: 906–921.
- Nesvizhskii AI, Keller A, Kolker E, Aebersold R (2003) A statistical model for identifying proteins by tandem mass spectrometry. *Anal Chem* 75: 4646–4658.
- Oliveros JC (2007) VENNY. An interactive tool for comparing lists with Venn Diagrams. <http://bioinfogp.cnb.csic.es/tools/venny/index.html> (last accessed 29 October 2012).
- Papakostas S, Vasemägi A, Vähä JP, Himberg M, Peil L, Primmer CR (2012) A proteomics approach reveals divergent molecular responses to salinity in populations of European whitefish (*Coregonus lavaretus*). *Mol Ecol* 21: 3516–3530.
- Philipp EER, Kraemer L, Melzner F, Poustka AJ, Thieme S, Findeisen U, Schreiber S, Rosenstiel P (2012) Massively parallel RNA sequencing identifies a complex immune gene repertoire in the lophotrochozoan *Mytilus edulis*. *PLoS One* 7: e33091.
- Polato NR, Vera JC, Baums IB (2011) Gene discovery in the threatened elkhorn coral: 454 sequencing of the *Acropora palmata* transcriptome. *PLoS One* 6: e28634.
- R Development Core Team (2009) R: A language and environment for statistical computing. R Foundation for Statistical Computing, Vienna, Austria. ISBN 3-900051-07-0. <http://www.R-project.org>.
- Simonian M, Nair SV, Neil JA, Raftos DA (2009) Proteomic clues to the identification of QX disease-resistance biomarkers in selectively bred Sydney rock oysters, *Saccostrea glomerata*. *J Proteomics* 73: 209–217.
- Stumpp M, Dupont S, Thorndyke MC, Melzner F (2011) CO<sub>2</sub> induced seawater acidification impacts sea urchin larval development II: gene expression patterns in pluteus larvae. *Comp Biochem Physiol A Mol Integr Physiol* 160: 320–330.
- Supek F, Bošnjak M, Škunca N, Šmuc T (2011) REVIGO summarizes and visualizes long lists of gene ontology terms. *PLoS One* 6: e21800.
- Tanguy A, Boutet I, Laroche J, Moraga D (2005) Molecular identification and expression study of differentially regulated genes in the Pacific oyster *Crassostrea gigas* in response to pesticide exposure. *FEBS J* 272: 390–403.
- Thompson EL, Taylor DA, Nair SV, Birch G, Haynes PA, Raftos DA (2011) A proteomic analysis of the effects of metal contamination on Sydney Rock Oyster (*Saccostrea glomerata*) haemolymph. *Aquat Toxicol* 103: 241–249.
- Thompson EL, Taylor DA, Nair SV, Birch G, Hose GC, Raftos DA (2012a) Proteomic analysis of Sydney Rock oysters (*Saccostrea glomerata*) exposed to metal contamination in the field. *Environ Pollut* 170: 102–112.

- Thompson EL, Taylor DA, Nair SV, Birch G, Haynes PA, Raftos DA (2012b) Proteomic discovery of biomarkers of metal contamination in Sydney Rock oysters (*Saccostrea glomerata*). *Aquat Toxicol* 109: 202–212.
- Todgham AE, Hofmann GE (2009) Transcriptomic response of sea urchin larvae *Strongylocentrotus purpuratus* to CO<sub>2</sub>-driven seawater acidification. *J Exp Biol* 212: 2579–2594.
- Tomanek L, Zuzow MJ, Ivanina AV, Beniash E, Sokolova IM (2011) Proteomic response to elevated P<sub>CO<sub>2</sub></sub> level in eastern oysters, *Crassostrea virginica*: evidence for oxidative stress. *J Exp Biol* 214: 1836–1844.
- Wang S, Peatman E, Liu H, Bushek D, Ford SE, Kucuktas H, Quilang J, Li P, Wallace R, Wang Y *et al.* (2010) Microarray analysis of gene expression in eastern oyster (*Crassostrea virginica*) reveals a novel combination of antimicrobial and oxidative stress host responses after dermo (*Perkinsus marinus*) challenge. *Fish Shellfish Immunol* 29: 921–929.
- Yates JR, Ruse CI, Nakorchevsky A (2009) Proteomics by mass spectrometry: approaches, advances, and applications. *Annu Rev Biomed Eng* 11: 49–79.
- Zhang G, Fang X, Guo X, Li L, Luo R, Xu F, Yang P, Zhang L, Wang X, Qi H *et al.* (2012) The oyster genome reveals stress adaptation and complexity of shell formation. *Nature* 490: 49–54.